



# 2006-07 Budget Workshop

---

Presented November 14, 2006



*Santee School District*

---

# Presentation Summary

---



- Budget Information
- Financial Report Summary
- Facilities Fiscal Management
- Multi-Year Planning
- Major Initiative Summary
- Other Planning Areas
- BAC Reduction Planning
- Summary & Direction



# Budget Information

---



- Phased Recovery Plan
- Revenue Summary
- Expenditure Summary
- Enrollment/Attendance Summary
- Fiscal Event Calendar
- Budget Glossary Key Terms



***Santee School District***

---

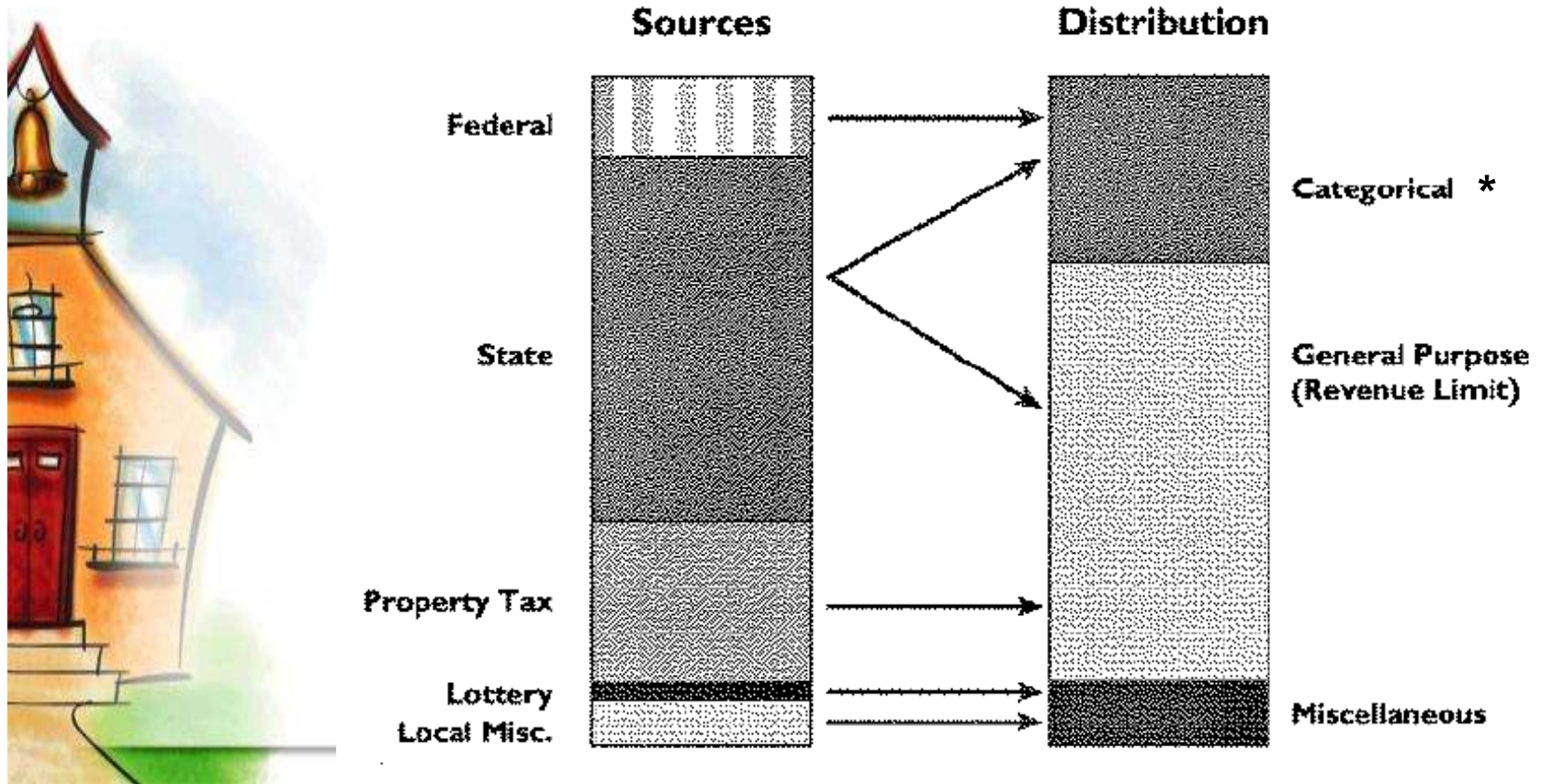
# Phased Recovery Plan



- Phase I of the plan was completed in December 2004 with the consolidation into the unrestricted general fund of approximately \$766,000 of prior year balances through various transfers, program improvements, and direct and indirect charge backs designed to maximize available resources as provided for under state law.
- Phase II was completed on March 15, 2005 with the submission of the District's 2004-05 Second Interim Report and related revisions. These revisions eliminated the District's (\$1.5) million 2004-05 unrestricted fund operating deficit.
- Phase III was completed with the adoption on June 21, 2005 of the 2005-06 Budget which established a projected unrestricted fund operating surplus for the fiscal year ended June 30, 2006.
- Phase IV and V planning continues through the 2009-10 fiscal year with budget actions proposed to mitigate the impact of anticipated future enrollment declines through the use of strategically planned budget reductions.



# Revenue Summary



EDSOURCE 8/03



**Santee School District**

\* Categorical expenditures are restricted by limitations established by federal and state law.

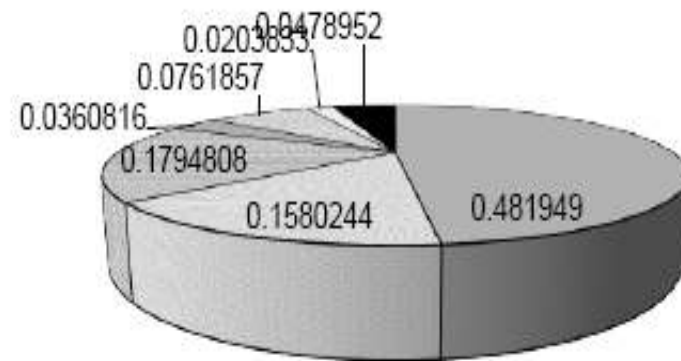


# Expenditure Summary



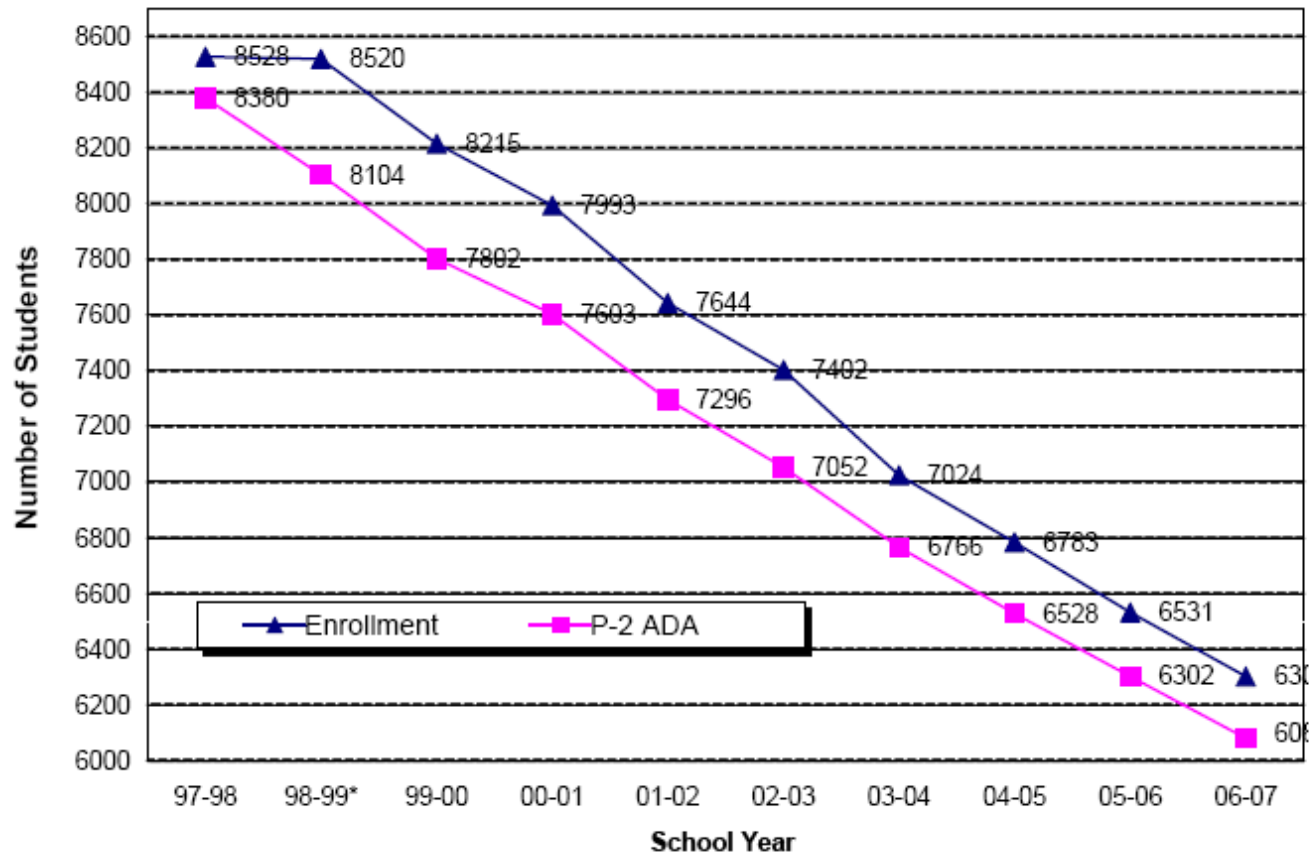
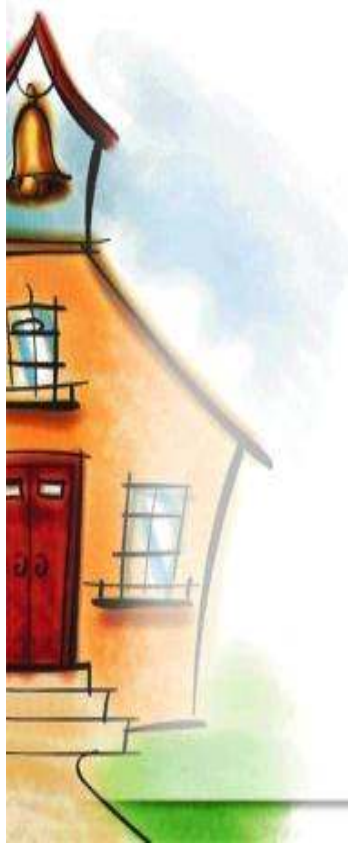
## SANTEE SCHOOL DISTRICT 2005-06 Actual Expenditures

- CERTIFICATED SALARY 48.2%
- CLASSIFIED SALARY 15.8%
- BENEFITS 17.9%
- BOOKS AND SUPPLIES 3.6%
- SERVICE AND OPERATIONS 7.6%
- CAPITAL OUTLAY 2.0%
- OTHER OUTGO 4.8%



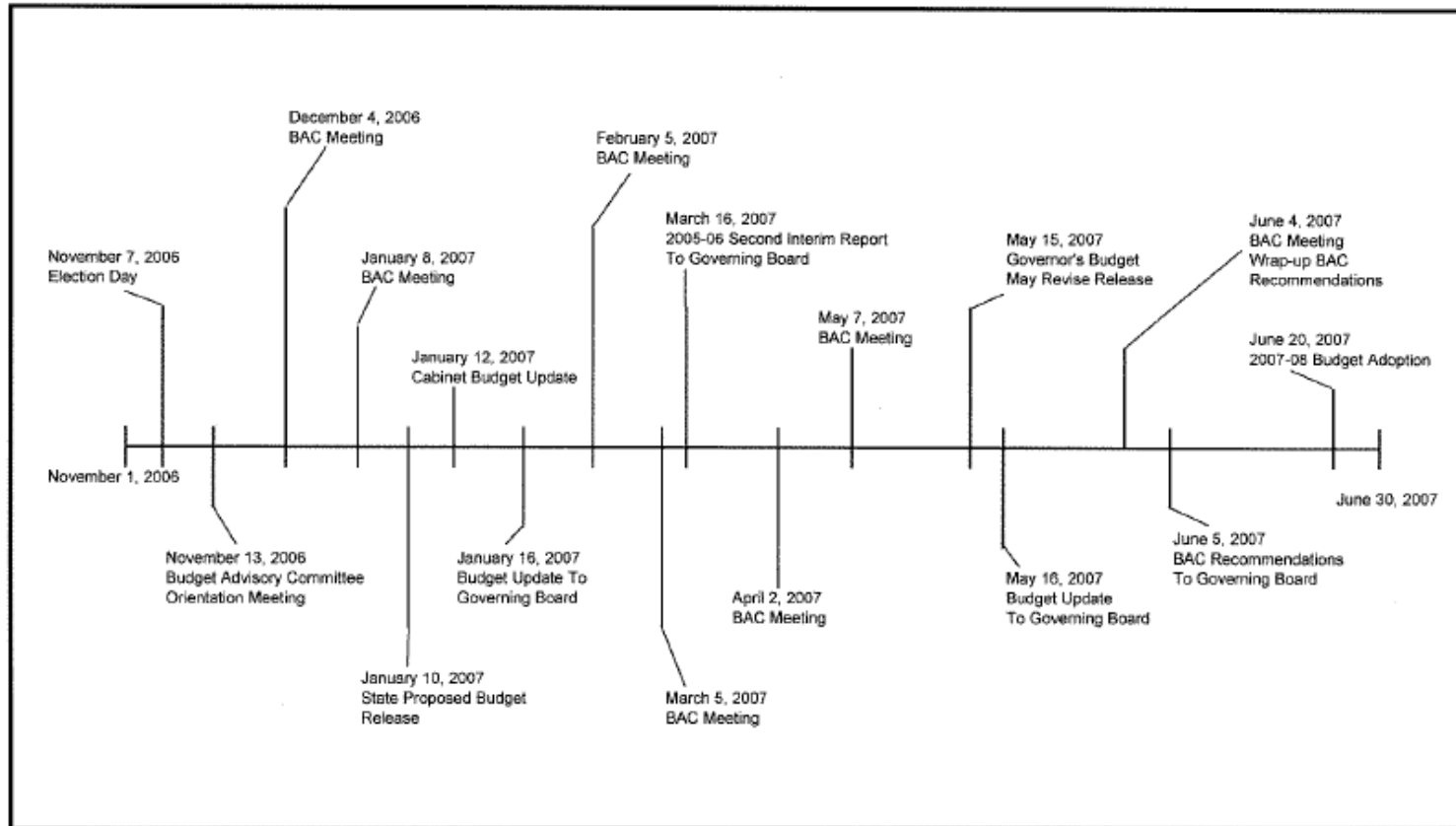
*Santee School District*

# Enrollment/Attendance



*Santee School District*

# Fiscal Events Calendar





# Financial Report Summary

---



- 2005-06 Unaudited Actuals
  - Budget/Actual Comparison
  - Fund Balance Summary
  - County Audit Letter
- 2006-07 Budget Initiatives
- Criteria and Standards Report



***Santee School District***

---

# 2006-07 Budget Initiatives

---



- Program Restorations
- Combination Classes
- New State Revenues
- Mandated Costs
- Capital Acquisition and Replacement



*Santee School District*

---

# Multi-Year Plan

---



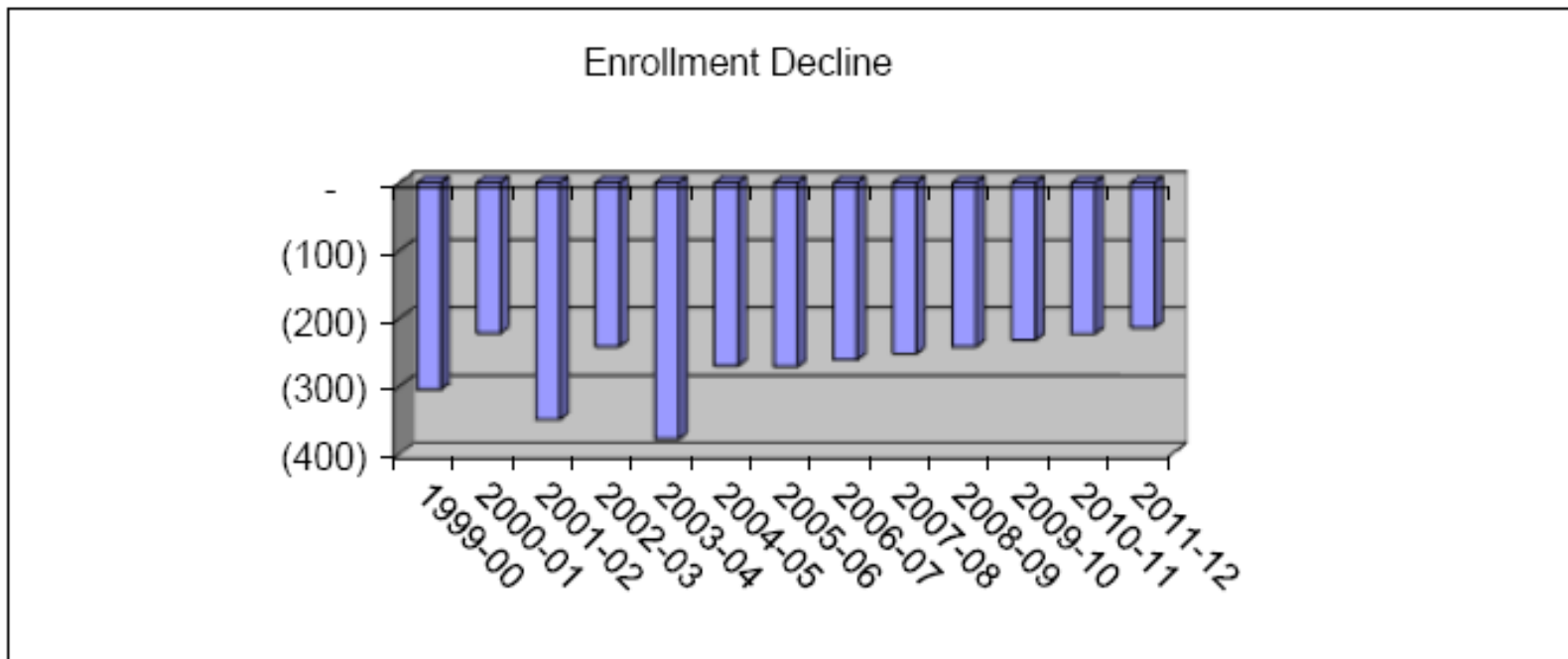
- Planning Assumptions
- Enrollment Projection
- First Interim Projection
- Reduction Summary
- Ending Reserve Analysis



*Santee School District*

---

# Enrollment Projection



***Santee School District***

# Strategic Expenditure Reductions



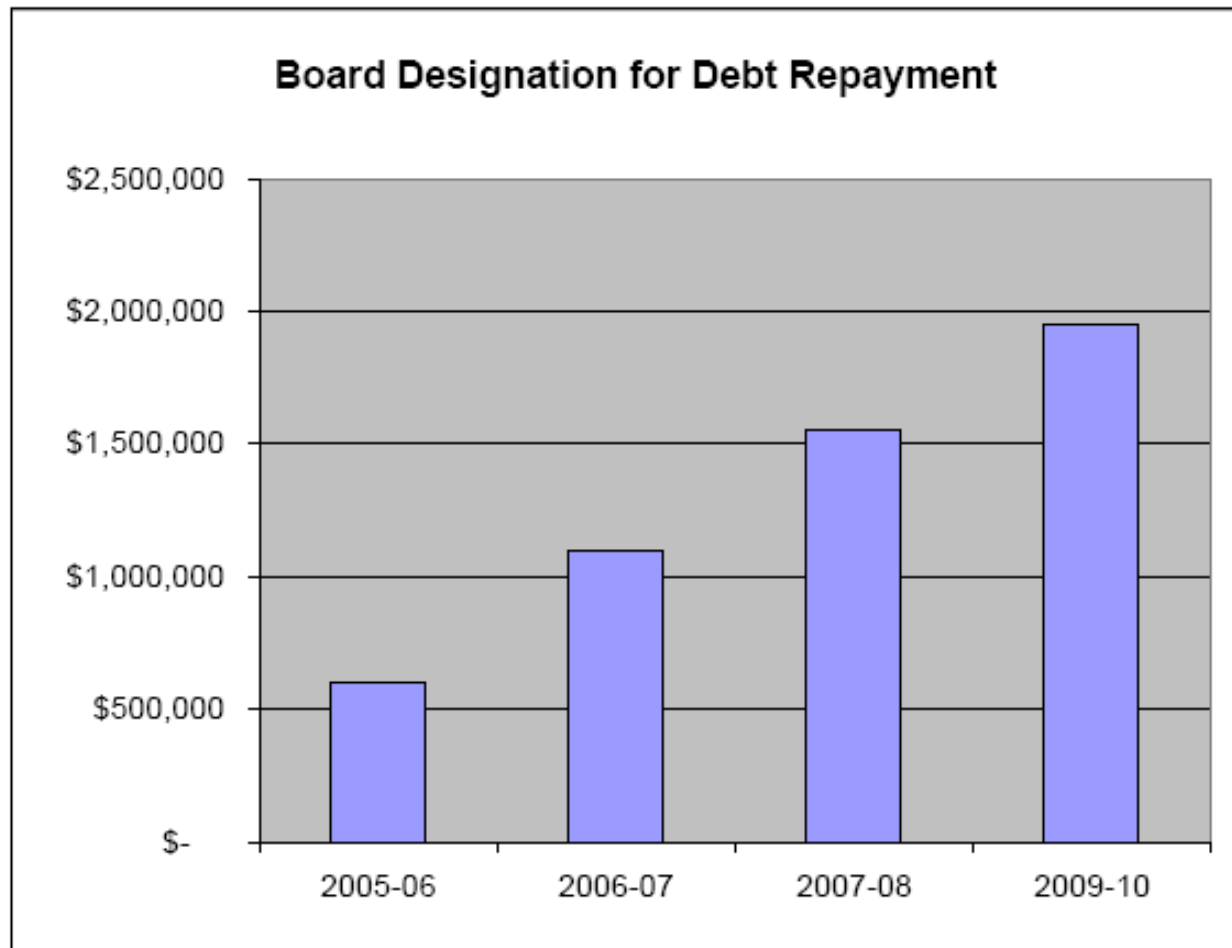
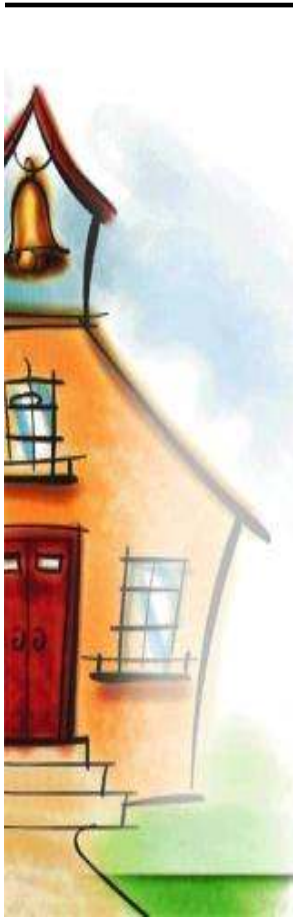
Figure 5  
Multiyear Strategic Plan Summary

	First Interim 2006-07	Year 1 Projected 2007-08	Year 2 Projected 2008-09	Year 3 Projected 2009-10	Year 4 Projected 2010-11	Year 5 Projected 2011-12
<b>Unrestricted General Fund</b>						
Early Retirement		\$ 525,000				
Other Adjustments/Reorganizations - BAC Actions		800,000				
Other Adjustments/Reorganizations - BAC Actions			\$ 500,000			
Other Adjustments/Reorganizations - BAC Actions				\$ 500,000	\$ 500,000	
Early Retirement					\$ 525,000	
Other Adjustments/Reorganizations - BAC Actions						\$ 500,000
	\$ -	\$ 1,325,000	\$ 500,000	\$ 500,000	\$ 1,025,000	\$ 500,000





# Unrestricted Fund Designation



***Santee School District***

# Fund Balance Summary



	First Interim
<b>Unrestricted General Fund</b>	
Net Increase/(Decrease) From Operations	\$ 125,227
Beginning Fund Balance	2,423,472
Special Reserve - Fund 17	1,655,011
<b>Ending Fund Balance</b>	<b>\$ 4,203,710</b>
<b>Summary Fund Balance Restrictions</b>	
Held for State Reserve Requirement	\$ (1,655,011)
Designated for Long-term Debt Repayment	(1,773,562)
Prepaid Expenditures	(220,154)
Restricted for SB 18 Transfer	(110,568)
Store Inventory Reserve	(75,000)
Revolving Cash	(15,000)
Restricted Federal and State Programs	-
<b>Total State and Federal Restricted Fund Balance</b>	<b>\$ (3,849,295)</b>
<b>Fund Balance Available for Board Designation</b>	<b>\$ 354,415</b>



***Santee School District***

# Major Initiatives

---



- Employee Compensation
- ADA Compliance
- Standardized Instructional Time
- Combination Classes
- District Wide Technology Initiative
- Facilities Modernization
- Staff Development



***Santee School District***

---

# Other Planning Areas

---



- Short-term Borrowing
- Information Systems – Data Reporting
- Rapid Delivery – Process Review
- GASB 45 – Post Retirement Benefits



***Santee School District***

---

# BAC Reduction Summary

---



- Contribution Programs - \$200,000
- Utilities and Operations - \$250,000
- Debit Repayment - \$175,000
- Central Services - \$150,000
- Staffing Efficiencies - \$200,000
- Interest Earning and Other - \$75,000



***Santee School District***

---



# Summary

---



- Direction Regarding Major Initiatives
- Other Focus Areas
- Question and Comments

